

R-TECH^{CW}

PREMIUM CAVITY WALL INSULATION

Description

R-Tech CW (Cavity Wall) is an engineered rigid insulation consisting of a superior closed-cell, lightweight and resilient expanded polystyrene (EPS) with advanced polymeric laminate facers. R-Tech CW is available with factory laminated MR (metallic-reflective) facers, white facers or a combination of the two. The R-Tech facers shed water to reduce moisture build-up in the cavity wall. The core of R-Tech is the same high-quality EPS as our InsulFoam insulations and meets or exceeds the requirements of ASTM C578, Standard Specification for Rigid, Cellular Polystyrene Thermal Insulation. R-Tech has excellent dimensional stability, compressive strength and water resistance properties. In addition, R-Tech CW is an ENERGY STAR[®] qualified insulation.

Uses

R-Tech Cavity Wall is designed for both commercial and residential cavity wall applications.

Advantages

- **Enhanced R-values.** Increased R-values can be obtained by placing the MR side of the R-Tech towards the dead air space within the interior wall. R-value gain is dependent on the amount of dead air space between the R-Tech and the inner wall. R-value gains are based on the ASHRAE Handbook of Fundamentals. See attached chart.
- **User Friendly.** R-Tech CW can be ordered with the InsulSnap[™] feature which scores the product longitudinally at any pre-ordered interval (commonly 16" or 24" o.c.) to accommodate brick wall ties. The InsulSnap feature minimizes labor by enabling the installer to cleanly break the product at the desired width while also minimizing product breakage and waste.
- **Jobsite Durability.** With a polymeric facer on either side of it, R-Tech CW is extremely flexible and durable.
- **Water Resistance.** R-Tech CW facers provide a surface that is virtually impervious to moisture.



- **Stable R-value.** The product's thermal properties will remain stable over its entire service life. There is no thermal drift, so the product is eligible for an Insulfoam 20-Year Thermal Performance Warranty.
- **Cost Effective.** R-Tech is typically less expensive than other interior wall insulations.
- **Environmentally Friendly.** R-Tech CW does not contain any ozone-depleting blowing agents, may contain recycled material and the foam core is 100% recyclable.
- **Insect and Mold Resistance.** R-Tech CW can be manufactured with an inert additive that deters termites and carpenter ants. R-Tech does not sustain mold and mildew growth.

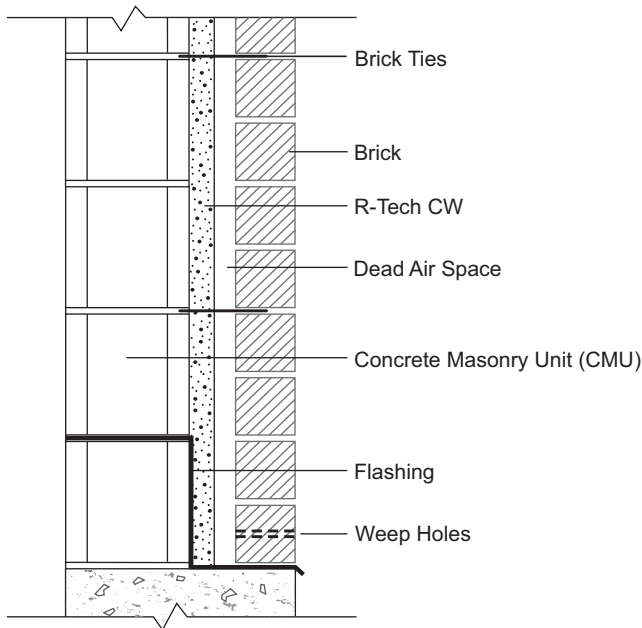
Sizes

R-Tech CW is available in 4' x 8' sheets with thicknesses ranging from .5" to 4.5". R-Tech CW can also incorporate the InsulSnap feature which allows the end user to cleanly break the 4' x 8' sheets into any desired width. Custom sizes are available upon request. impact on lead times.

R-TECH_{CW}

PREMIUM CAVITY WALL INSULATION

Typical Cavity Wall Application



Physical Properties

Please refer to the appropriate R-Tech data sheet for typical physical properties.

Installation Recommendations

1. Cut the inner wall's mortar joints flush with the CMU to provide an even surface for the R-Tech IW.
2. Install R-Tech IW directly to the CMU with an approved mastic or mechanical fastener. The MR side of the R-Tech should be facing outward.
3. Mechanically attach the furring strips through the R-Tech IW and into the CMU with an approved fastener.
4. Attach the gypsum wall board to the furring strips and finish the wall per appropriate specifications.

Effective R-values^a (metallic-reflective facer and dead air space)

R-Tech Thickness	Design Temp. °F	Effective R-value (R-Tech MR + Air Space) ^b
0.5"	40	4.4
	75	4.3
0.75"	40	5.4
	75	5.2
1.00"	40	6.5
	75	6.2
1.25"	40	7.5
	75	7.1
1.50"	40	8.6
	75	8.1
1.75"	40	9.6
	75	9.1
2.00"	40	10.6
	75	10.0
2.25"	40	11.7
	75	11.0
2.50"	40	12.7
	75	11.9

^a Effective R-values determined using InsulFoam I. Higher density InsulFoam products will provide higher R-values.

^b Requires 0.75" - 3.50" dead air space and the R-Tech MR facer towards the dead air space.