

# R-TECH<sup>IW</sup>

## PREMIUM INTERIOR WALL INSULATION

### Description

R-Tech IW (Interior Wall) is an engineered rigid insulation consisting of a superior closed-cell, lightweight and resilient expanded polystyrene (EPS) with advanced polymeric laminate facers. R-Tech IW is available with factory laminated MR (metallic-reflective) facers, white facers or a combination of the two. The core of R-Tech is the same high-quality EPS as our InsulFoam insulations and meets or exceeds the requirements of ASTM C578, *Standard Specification for Rigid, Cellular Polystyrene Thermal Insulation*. R-Tech has excellent dimensional stability, compressive strength and water resistance properties. In addition, R-Tech IW is an ENERGY STAR® qualified insulation and can contribute towards LEED® credits.

### Uses

R-Tech IW is designed for both commercial and residential interior wall applications.

### Advantages

- **Enhanced R-values.** Increased R-values can be obtained by placing the MR side of the R-Tech towards the dead air space within the interior wall. R-value gain is dependent on the amount of dead air space between the R-Tech and the inner wall. R-value gains are based on the ASHRAE Handbook of Fundamentals. See attached chart.
- **Jobsite Durability.** With a polymeric facer on either side of it R-Tech IW is extremely flexible and durable insulation.
- **Water Resistance.** R-Tech IW facers provide a surface that is virtually impervious to moisture.
- **Stable R-value.** The product's thermal properties will remain stable over its entire service life. There is no thermal drift, so the product is eligible for an Insulfoam 20-Year Thermal Performance Warranty.
- **Cost Effective.** R-Tech is typically less expensive than other interior wall insulations.
- **Environmentally Friendly.** R-Tech IW does not contain any ozone-depleting blowing agents, may contain recycled material and the foam core is 100% recyclable.
- **Insect and Mold Resistance.** R-Tech IW can be manufactured with an inert additive that deters termites and carpenter ants. R-Tech does not sustain mold and mildew growth.

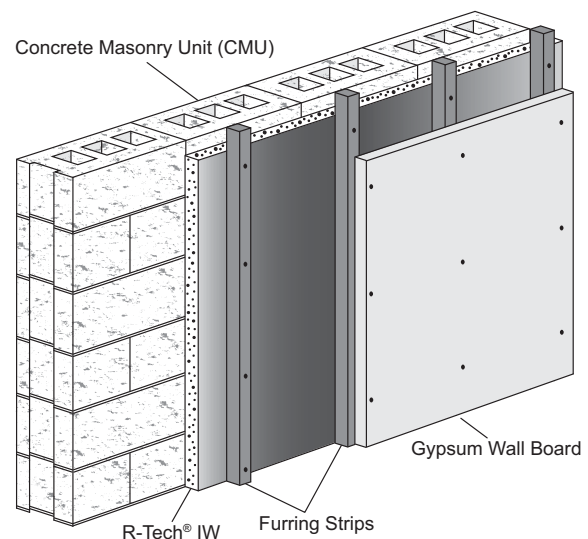


- **Proven Performance.** EPS has been manufactured using the same chemistry since the mid-1950s, providing proven performance.

### Sizes

R-Tech IW is available in 4' x 8' sheets with thicknesses ranging from .5" to 4.5". Custom sizes are available upon request. In addition, custom sizes are available upon request with little or no impact on lead times.

### Typical Interior Wall Application



# R-TECH<sub>IW</sub>

## PREMIUM INTERIOR WALL INSULATION

### Physical Properties

Please refer to the appropriate R-Tech data sheet for typical physical properties.

### Installation Recommendations

1. Cut the inner wall's mortar joints flush with the CMU to provide an even surface for the R-Tech IW.
2. Install R-Tech IW directly to the CMU with an approved mastic or mechanical fastener. The MR side of the R-Tech should be facing outward.
3. Mechanically attach the furring strips through the R-Tech IW and into the CMU with an approved fastener.
4. Attach the gypsum wall board to the furring strips and finish the wall per appropriate specifications.

### Effective R-values<sup>a</sup> (metallic-reflective facer and dead air space)

R-Tech Thickness	Design Temp. °F	Effective R-value (R-Tech MR + Air Space) <sup>b</sup>	Effective R-value (R-Tech MR + Air Space) <sup>b</sup>
0.5"	40	4.4	4.6
	75	4.3	4.4
0.75"	40	5.4	5.7
	75	5.2	5.4
1.00"	40	6.5	6.9
	75	6.2	6.5
1.25"	40	7.5	8.0
	75	7.1	7.5
1.50"	40	8.6	9.1
	75	8.1	8.6
1.75"	40	9.6	10.3
	75	9.1	9.6
2.00"	40	10.6	11.4
	75	10.0	10.6
2.25"	40	11.7	12.5
	75	11.0	11.7
2.50"	40	12.7	13.6
	75	11.9	12.7

<sup>a</sup> Effective R-values determined using InsulFoam I and InsulFoam II.

<sup>b</sup> Requires 0.75" - 3.50" dead air space and the R-Tech MR facer towards the dead air space.